

---

# *Cub Cadet.*

## OPERATOR'S MANUAL

---



### **Twin Rear Bagger — Model 19A30003100**

**⚠ WARNING**

**READ AND FOLLOW ALL SAFETY RULES AND INSTRUCTIONS IN THIS MANUAL  
BEFORE ATTEMPTING TO OPERATE THIS MACHINE.  
FAILURE TO COMPLY WITH THESE INSTRUCTIONS MAY RESULT IN PERSONAL INJURY.**

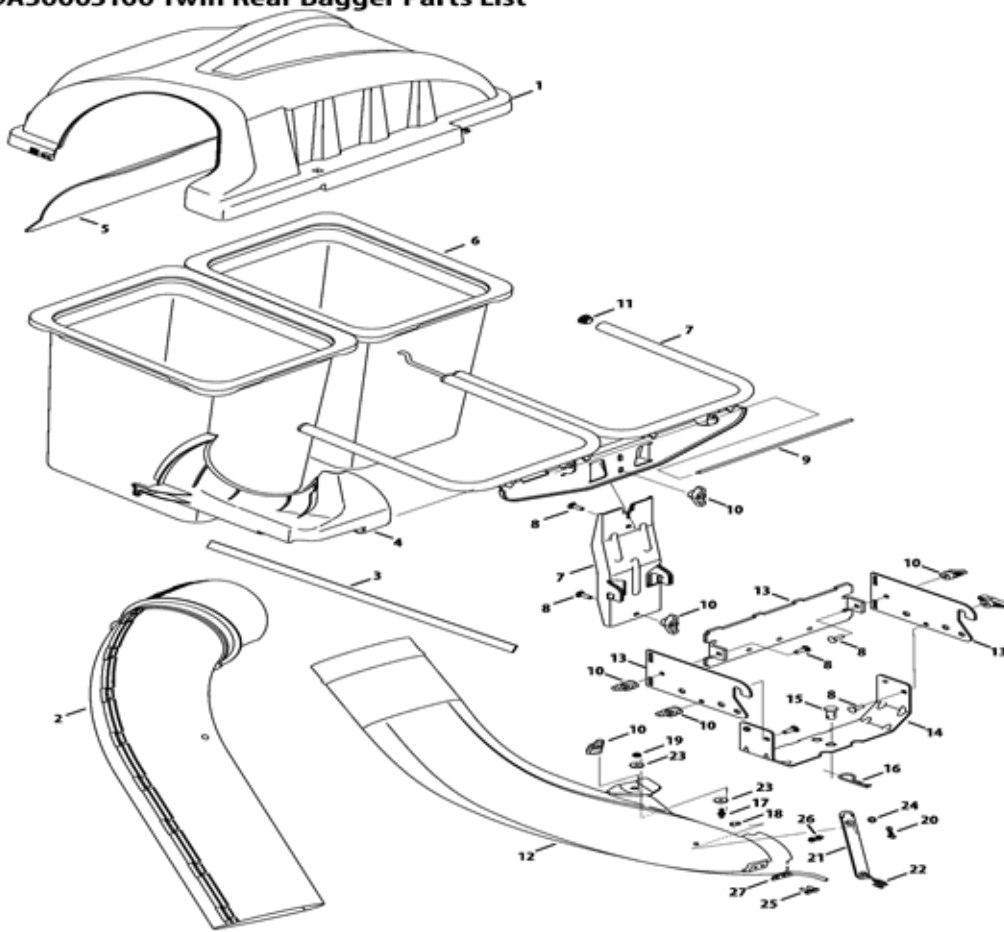
---

CUB CADET LLC, P.O. BOX 361131 CLEVELAND, OHIO 44136-0019

---

19A30003100 Twin Rear Bagger Parts List

5



16

更新日：2023-01-16 印刷日付：2023-03-31

表示 番号	新宮品番	LV	部品名称	個数1	個数2	個数3	個数4	メーカー品番	備考
1			Double Bagger Cover Assembly	1				931-04292	
2			Upper Chute Assembly	1				931-04295A	
3			Self-Adhesive Foam Strip	1				721-04388	
4			Upper Chute Support	1				731-06497	
5			Bagger Cover Screen	1				731-06504	
6			Grass-bag Assembly	1				964-04090A	
7			Vertical Support Bracket	1				683-04519A-0637	
8			Carriage Screw, 5/16-18 x 1.00"	1				710-0276	
9			Cover Hinge Pin	1				711-04988	
10			Wing Knob, 5/16-18	1				720-04122	
11			End Plug	1				735-0246A	
12			Discharge Chute Elbow	1				731-09173	
13			Hitch Bracket Assembly	1				689-00304	
14			Universal Bracket Support	1				783-08129-0637	
15			Clevis Pin, .62" Dia.	1				711-0309A	
16			Internal Cotter Pin, .148 x 3.00	1				714-0117	
17			Attachment Pin	1				711-05049	
18			Clevis Pin, 5/16 x .75 Lg.	1				711-05063	
19			Flange Lock Nut, 1/4-20	1				912-3027	
20			Bow-Tie Cotter Pin, 72	1				714-04040	
21			Chute Strap, 6.00 Lg.	1				723-04008A	
22			Torsion Spring Hook	1				732-04510A	
23			Flat Washer, .265 x .938 x .120	1				936-0176	
24			Flat Washer, .344 x .620 x .033	1				736-0204	
25			Screw 1/4-20 X .62	1				710-0751	
26			Nut	1				712-04064	
27			Chute Rod, Lower	1				747-06043	
28			Flange Lock Nut, 3/8-16	1				712-04065	